

Why Slice Ceramic Blades?



Code: SLICE-CBL

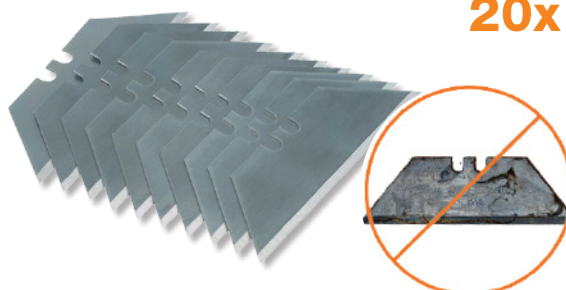
up to
10x
longer lasting
vs. steel

A single Slice ceramic blade is equivalent up to 10 high-end double-sided metal blades or up to 20 high-end single sided metal blades

1x



20x



Slice ceramic technology

- Safe + clean made from 100% Zirconium Oxide
- Patented thicker design easier to hold and handle
- 1.5mm thick vs. 0.6mm standard metal
- Stays sharp up to 10x longer vs. steel
- Less blade changes
- A safer cutting experience

Conventional steel blades

- Dull & rust quickly
- Dull blades require excessive force
- Dangerous and uncontrolled cutting
- Results in millions of hospital visits a year

SLICE-CBL Ceramic utility blade (4 pack)



34mm long

- Patent-pending thicker blades
- Easier & safer to handle vs. metal
- Strong and durable
- Safer rounded edges
- Double sided
- Single Slice ceramic blade is equivalent to up to 20 single-edge metal blades
- Made from pure Zirconium Oxide ZrO2
- Only diamonds are harder



Ceramic Utility Blade (2 pack)



- Rounded-tips for added safety
- Up to 10x sharper than steel
- Safer than traditional metal utility knife blades
- non-conductive, non-magnetic
- Never-rusts; chemically inert



Ceramic blades for craft knife (4 pack)



- 10x sharper and lasts 10x longer than metal
- Never rusts, chemically inert, non-magnetic
- Blade stays sharp and never rusts
- Safer rounded tip
- Less blade changes means less injuries



SLICE-BC Manually retractable box cutter



- Fully retractable and adjustable length blade
- Ergonomic design, prevents hand fatigue
- Ceramic blade lasts 10x longer than steel
- Manual 3 blade positions

SLICE-BCAR Auto retractable box cutter



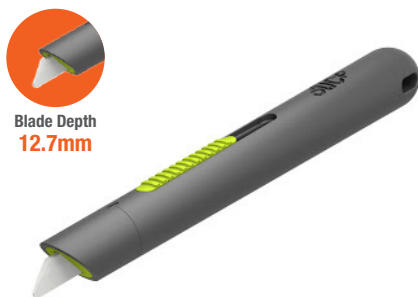
- Spring loaded, auto return safety mechanism
- Ergonomic design, prevents hand fatigue
- Ceramic blade lasts 10x longer than steel
- Hand sharpened blades

SLICE-PC Precision cutter



- Safer than traditional craft knives
- Ambidextrous non-slip finish
- Safe micro-ceramic blade stays SHARP
- Limited blade exposes, less injuries

SLICE-PEN CUTTER Auto retractable pen cutter



- Auto-retractable slider button with rubberized comfort grip
- Ceramic blade with rounded tip for added safety
- Lanyard key-ring hole is designed NOT to go in your pocket (no pocket clips for safety)

SLICE-SC Coupon cutter



- Ceramic long lasting blade
- Ideal for cutting paper, opening plastic packaging, DVD's & CD's
- Blade stays sharp and never rusts
- Built in magnet and key-ring hole

SLICE-LO Letter opener



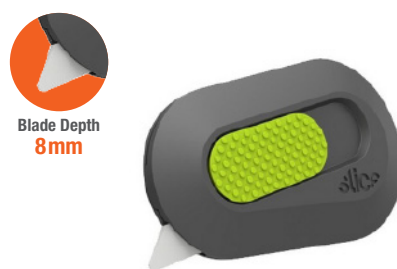
- Lightweight innovative letter opener
- eliminates paper cuts
- Built-in magnet for easy storage

SLICE-SCIS Stainless steel scissor



- Sharp powerful blades
- Japanese stainless steel
- Lay-flat design

SLICE-MINI Mini cutter



- Auto-retractable slider button with rubberized comfort grip
- Ceramic blade with rounded tip for added safety
- Easy no-tool blade change
- Built-in magnet

slice™

Award Winning Design

Slice collaborate with some of the most innovative designers on the planet. They take everyday objects - scissors, safety knives, letter openers, ceramic knives, Safety Cutters - and rethink them.

Slice goal is to help you do it with style, beauty, and grace. That's why every Slice™ cutting tool is a passionate celebration of bold design mixed with extraordinary function and forward-thinking safety features.