

OLFA EXTRA LONG LARGE 18MM SNAP CUTTER XL-2



The OLFA® XL-2 Heavy-Duty Extra Long Snap Cutter was designed with hard-to-reach places in mind. The blade channel offers an extra 6.25" of reach vs. standard OLFA® blade channel lengths. Reaching along the bottom of windshields will no longer be a problem with our XL-2 Long Reach Knife. It has a locking thumbscrew, a stainless steel blade channel, and a rubber grip that provides safety and extra comfort when using this knife.

XL-2 OLFA® Extra Long 18mm Snap Cutter

- Designed for Hard-to-Reach Places
- Rubber grip inset for comfort
- Thumbscrew blade lock for unlimited blade positioning
- Stainless steel blade channel for stability and strength
- No tool blade change
- Preloaded with a OLFA® high quality snap-off blade
- Made in Japan

APPLICATION:

✓ Carpets	✓ Drywall	✓ Roofing Repair
✓ Flooring	✓ Linoleum	✓ Cardboard

REPLACEMENT BLADES:

LSOL-10B
18mm Solid Blade
Tube of 10 Blades



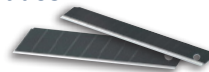
LB5B
18mm Snap-off Blade
Tube of 5 Blades



LBB5B
18mm Black Ultra Sharp
Snap-off Blade Tube of 5 Blades



Highest Quality Snap Blades



- Superior Japanese quality
- Made from the finest Japanese quality tool steel
- Best quality and most accurate snap off blade
- Sharpest cutting blade on the market
- Last longer going head to head against any other blades

Code: XL-2

